

**2009 COLLECTION**





## **TOSCHI***Golf*

The foundation of your entire golf game, the power of your swing, and the accuracy of your shot, is dependent upon the shoes you stand in. Acting as the interface between you and the green, responsible for traction, stability and consistency your golf shoe is the most important piece of equipment you bring to the course. The Toschi Golf Collection represents my continuous commitment to designing and building the absolute best golf footwear in the world. I have applied quality, technology and design elements that have generated performance benefits unfound in any other footwear. The performance of my footwear has been applauded by the most respected critics in golf.

Made in Italy, designed without compromise and inspired by a challenge to create the ultimate piece of equipment in the game of golf.

Michael Toschi



Happy Croco Green



Happy Croco Blue



Cigar / White



Black / White



Chocolate



Black



A much better than classic saddle shoe, totally equipped for all-season play, the G1 is made with hydropellent Italian calf leather, a kidskin lining and equipped with our classic CONTACT outsole in black or our TERRAGRIP CONTACT outsole in blue or green.

Available in sizes 6.5 - 15



Black / White



Marrone / White



Black



White



The very sophisticated and stylish wingtip with all-weather durability. The G2 is made with hydropellent Italian calf leather and a kidskin lining and is equipped with our classic CONTACT outsole in black.

Available in sizes 6.5 - 15



White



Black



Black/White



Tobacco



Our dry climate performance golf shoe equipped with red **TERRAGRIP CONTACT** outsole technology. Designed to perform in dryer conditions with ventilation ports and perforated Italian calf leather

Available in sizes 6.5 - 15



Black



Chocolate



Black / White



The G4 takes both style and comfor to a new level. Constructed with ultra supple Italian leather and our new blue TERRAGRIP CONTAC outsole, the G4 brings new life to the course.

Available in sizes 6.5 - 15



Brown



Black



Chocolate



Classic and modern, the G5 is a blend of understated style and innovative technology. Equipped with our forest green TERRAGRIP CONTAC outsole.

Available in sizes 6.5 - 15



White / Green



Black/Green



Steel/Orange

With a lime green or orange TERRAGRIP outsole and hydropelant technical leathers, The GX redefines the attitude of performance on the golf course

Available in sizes 6.5 - 15

## Balanced Platform Concept = Centered Equilibrium



Most golf shoes force the foot to stand on an inclined plane, or what essentially is a wedge. The foot slides to the front of the shoe and puts the player off balance, falling forward. During a golf swing, the player has to compensate for the effect of an unbalanced standing platform. Toschi golf shoes are designed specifically to keep the player centered and balanced. This is achieved by shaping the standing platform with the correct ratio between heel height, ball of foot position and toe spring. Toschi golf shoes improve a player's balance and in turn, his swing consistency. Specifically engineered to keep the foot centered and the player balanced.

## CIS- CarbonLite Ionet Suspension



CarbonLite Ionet Suspension (CIS) is comprised of a sculpted carbon fiber footbed that interfaces with a suspension matrix outsole.

CarbonLite: Our footbed is made with a carbon fiber standing platform nested in EVA with Duragel pads under the heel and the ball of the foot.

Acting as a spring orthotic, the carbon fiber is molded in a 3-dimensional anatomical shape that cradles the heel and bridges the arch. CarbonLite delivers outstanding comfort that is supportive, stable and balanced. CarbonLite reduces foot fatigue and improves foot and leg alignment. Unlike common foam or sponge insoles, CarbonLite never distorts nor changes shape. The fit and support is consistent through the entire life of the shoe.

Ionet Suspension is the internal architecture of a Toschi sole where the geometry favors anatomy. Inside the soles of all Michael Toschi footwear is a molded group of response zones that individually react to the loads applied by the wearer. The heel strike zone cushions the impact upon heel contact with the ground. The torsion zone controls the twisting loads that are applied to all shoes as they conform to the ground. Independent suspension pillars move fore and aft to dampen the shock waves imposed on the ball of the foot. They also store forward energy and return it during push off. Stiffening gussets stabilize the toe of the shoe from distortion and facilitates proper gait.

## CONTAC



All Toschi golf shoes are equipped with a very technical outsole tread design called CONTAC. The traction characteristics of CONTAC provide a playability that exceeds any outsole tread pattern in the industry, including traditional spikes. Besides the ability of purely gripping the turf, CONTAC is designed with the consideration of how the sole needs to grip. The attributes of CONTAC come from three basic elements:

1. Directionally specific lug design
2. Shape and placement
3. Flexibility

The Toschi CONTAC outsole design offers the widest traction footprint in the industry, creating the most stable standing platform on the turf.

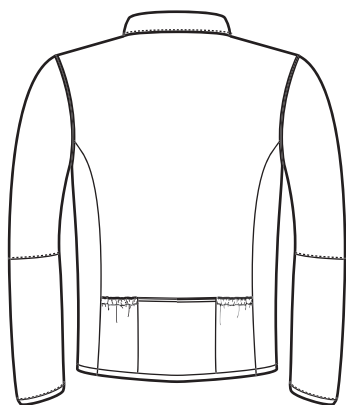
## TERRAGRIP



TERRAGRIP is a specially blended compound designed to offer superior flexibility and elasticity for exceptional ground feel in dry conditions. The elasticity of TERRAGRIP offers both greater return of kinetic energy and additional surface contact. TERRAGRIP compound is more compliant to surface irregularities and allows traction lugs to maintain more contact during the dynamic loads and movements applied during the game. The result is a golf shoe with more usable traction, increased ground feel and a lower walking resistance.

*G401*

TOSCHI *Golf*



Black / Blue Stitch



Chocolate / Blue Stitch

The ultimate golf sweater with rear pockets, moc collar, stretch side panels and a performance fit. Merino wool, handmade in Italy.

Available in sizes S-XXL.



Black



Chocolate



A perfectly fitting pull over V-neck sweater as clean as they get.  
Merino wool, handmade in Italy.

Available in sizes S-XXL.



White



Black



Our version of a classic Polo but with much better proportions, elk horn buttons and a summer weave cotton. Combed cotton and handmade in Italy.

Available in sizes M-XXL.



White



White / Black



Black

A thin, light weight performance golf and sport sock made with long fiber Coolmax, a reinforced toe and heel, ventilated top panels and arch and ankle support zones.  
Made in Italy.

Available in sizes  
S (7-8.5), M (9-10.5),  
L (11-13), XL (14-16).



- A - T Air Cap (black or white)
- B - TG Micro Vent Cap (black or white)
- C - Toschi Flex Cap (black)
- D - Toschi Flex G Cap (black)

One size fits most.





**MICHAEL TOSCHI INTERNATIONAL**

[www.toschi.com](http://www.toschi.com)